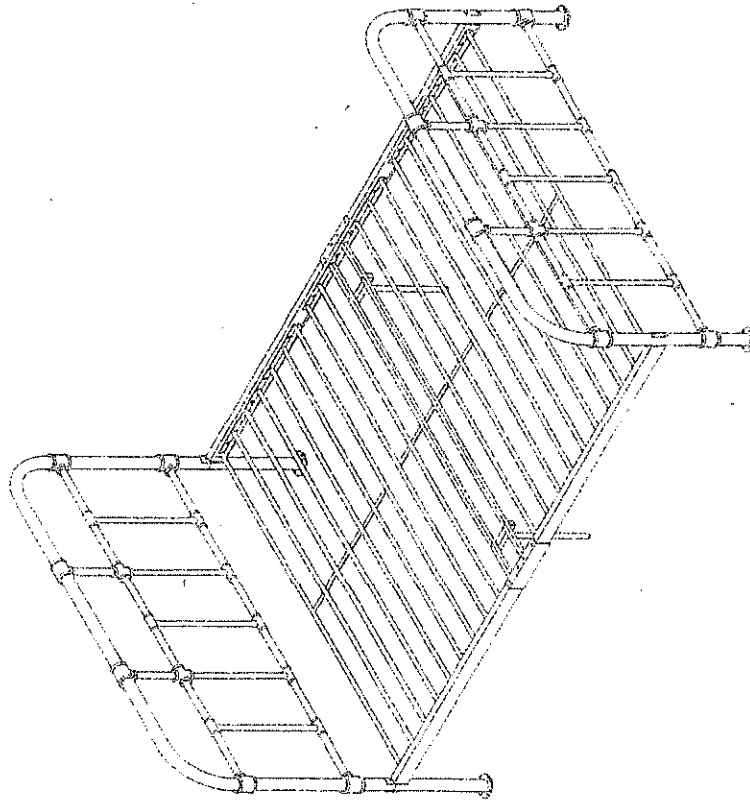
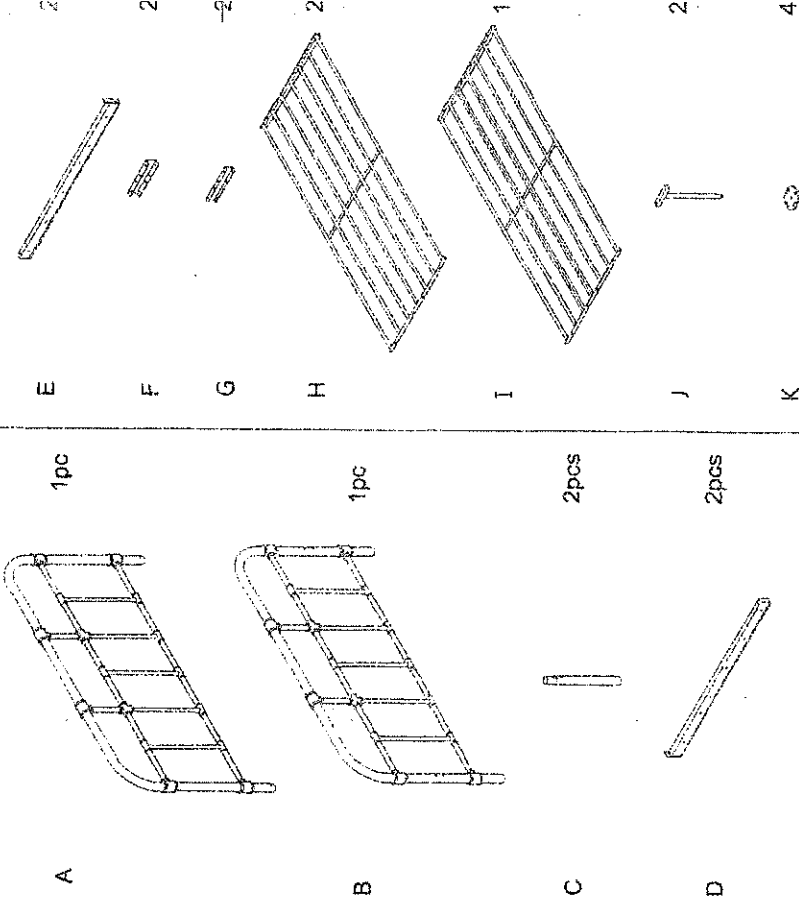


ASSEMBLY INSTRUCTIONS

ITEM NO.:30735F



PARTS IDENTIFICATION

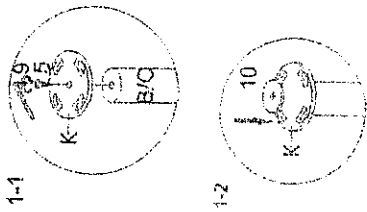
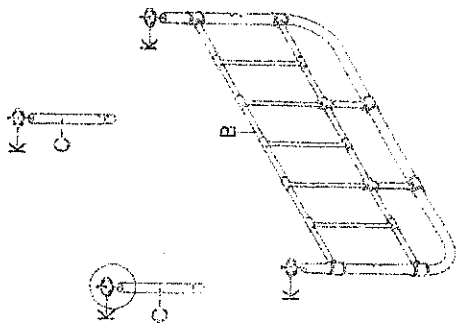


HARDWARE LIST

1	M6x15		20pcs	M6x30		8pcs	M6x60		3
2	M6x27		4pcs	M6x25		4pcs	MBx15		6
3			4pcs	5x5		1pc	4x4		9
4	Ø40x1.5		4pcs						

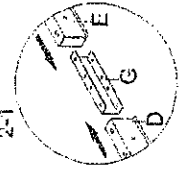
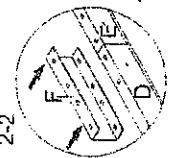
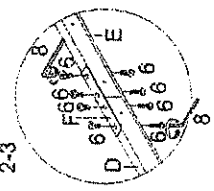
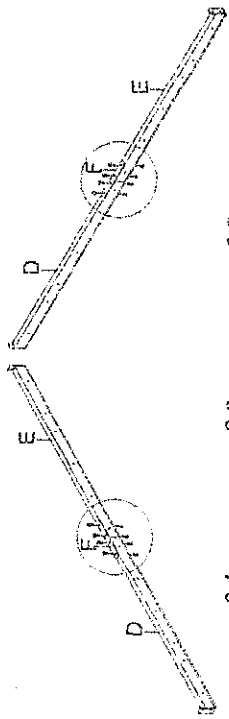
Do not tighten screws until completely assembled.

STEP 1.



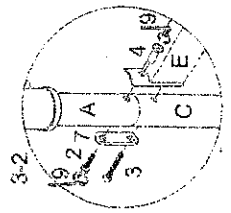
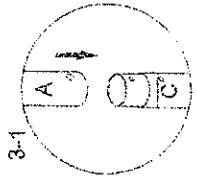
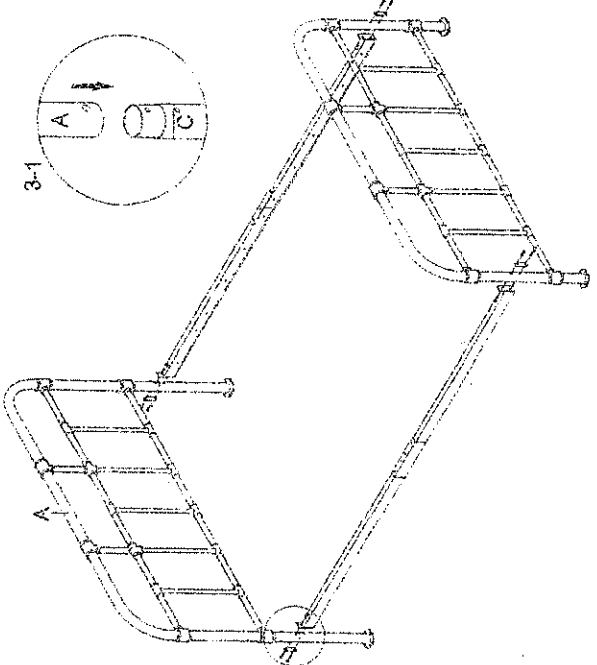
5	M6x25	4pcs
10	Ø40x1.5	4pcs

STEP 2.



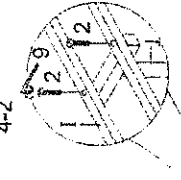
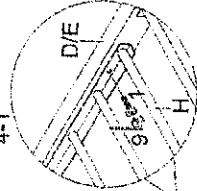
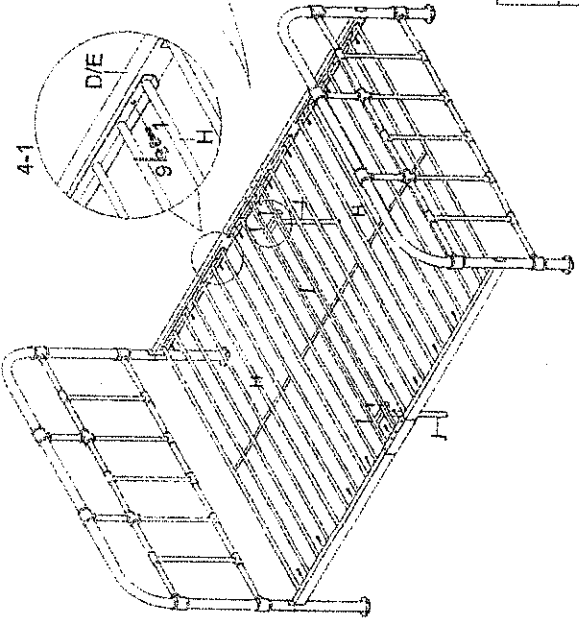
5	M6x15	16pcs
---	-------	-------

STEP 3.



2	M6x30	4pcs
3	M6x60	4pcs
4	M6x27	4pcs
7		4pcs

STEP 4.



1	M6x15	20pcs
2	M6x30	4pcs